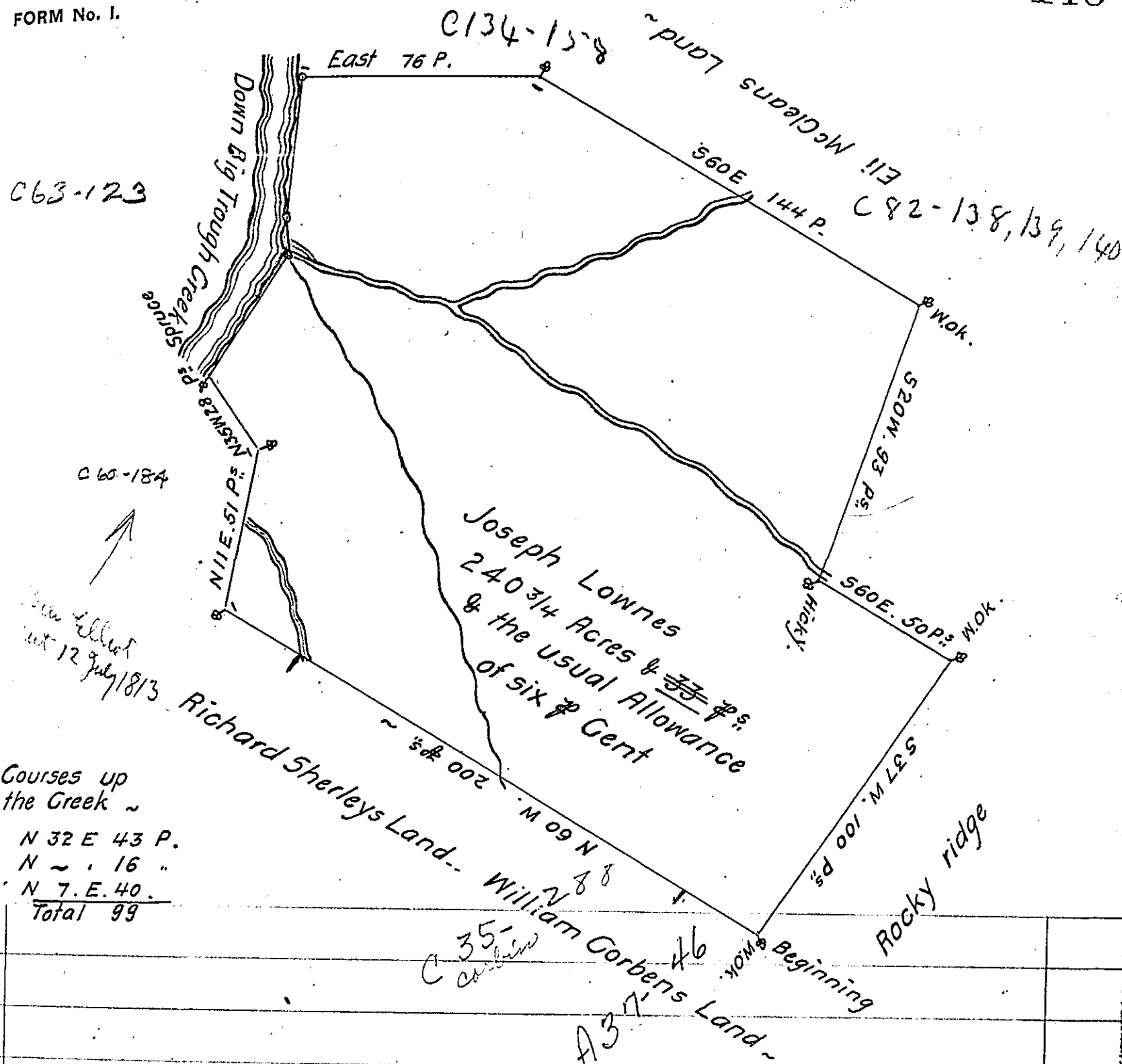


FORM No. 1.



Courses up  
the Creek ~  
N 32 E 43 P.  
N ~ 16  
N 7 E 40  
Total 99

A Draught of a Tract of Land Situate in Hopewell Township  
(now Huntingdon)  
Bedford County on Big Trough Creek Adjoining Land of William Corben  
& Richard Sherley deceased Containing two hundred and forty and 3/4  
Acres & 33 Perches & the Usual Allowance of Six P<sup>ts</sup> Cent for Road  
Surveyed 2<sup>d</sup> Day of September 1784 In Pursuance of a Warrant  
Granted to Joseph Lowmes Dated the 11<sup>th</sup> day of August 1784  
George Woods D.S.  
To John Lukens Esq<sup>r</sup>. S.G.

IN TESTIMONY that the above is a copy of the original remaining on file in  
the Department of Internal Affairs of Pennsylvania, made  
conformably to an Act of Assembly approved the 16th day of  
February, 1833, I have hereunto set my Hand and caused  
the Seal of said Department to be affixed at Harrisburg,  
this twelfth day of September 1905

*Isaac P. Brown*  
Secretary of Internal Affairs.